

MYSTERY PHOTO



DECEMBER 2001 MYSTERY PHOTO

This mystery photo shows a hole in the ground, about 1.5 cm in diameter and 30 cm deep. At the surface of the ground, the opening is edged with plant material glued together. This hole was photographed in sandy soil near Leibenthal, SK on 17 May 2001. No tracks led into or out from the entrance, and nothing was visible inside it. Who makes these holes?

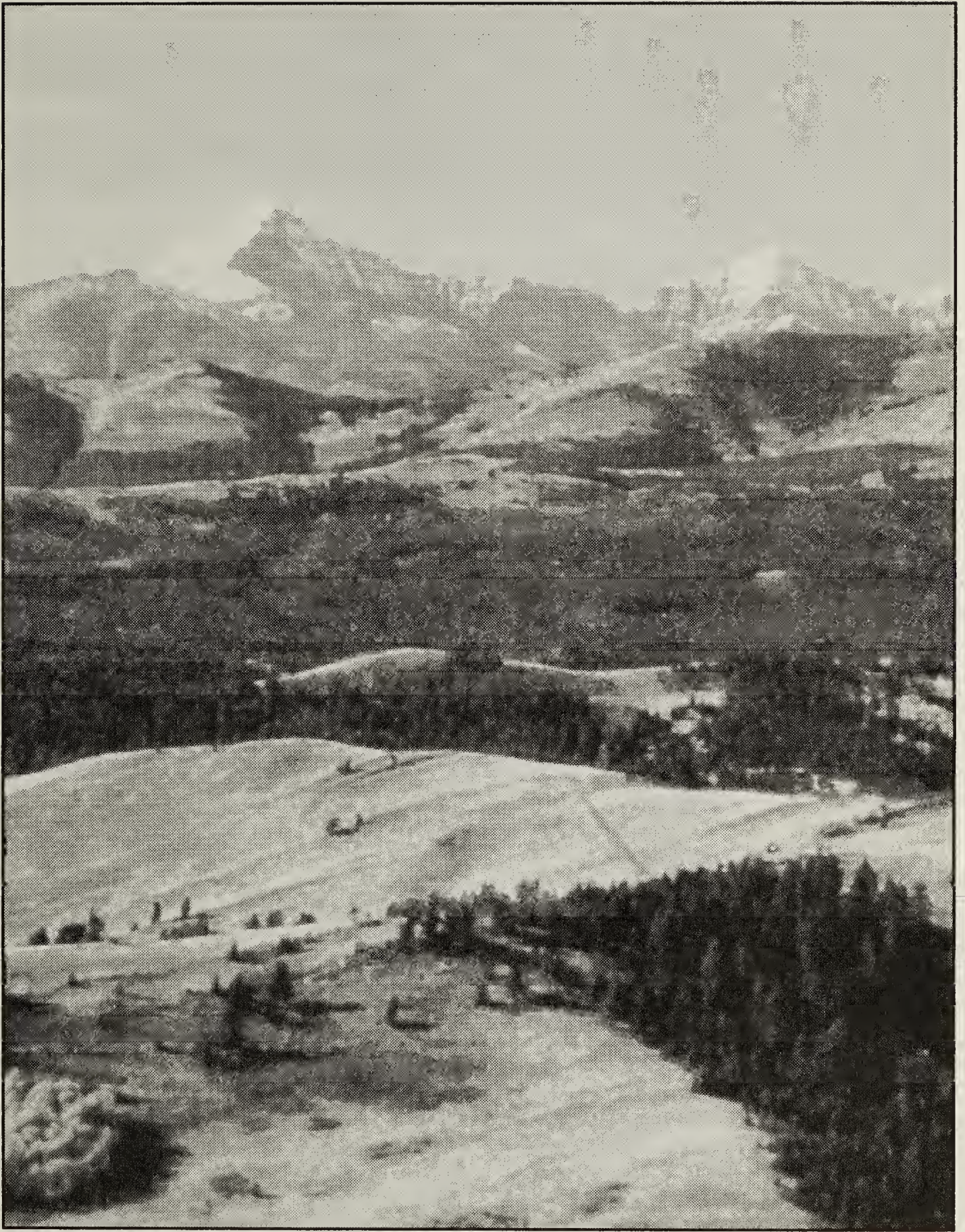
Answer to September 2001 MYSTERY PHOTO

The “wee beast from the slough” is a larval Tiger Salamander (*Ambystoma tigrinum diaboli*). This one, recently hatched from the egg, is 1 cm long. The ‘frills’ around its head are external gills used for gas exchange and are reabsorbed during metamorphosis to

the adult form. (Salamander young begin developing lungs soon after their limbs form but they use them primarily for controlling buoyancy until shortly before metamorphosis.) Salamanders are carnivorous throughout life whereas frog tadpoles are primarily plant (especially algae) eaters and frogs eat insects.

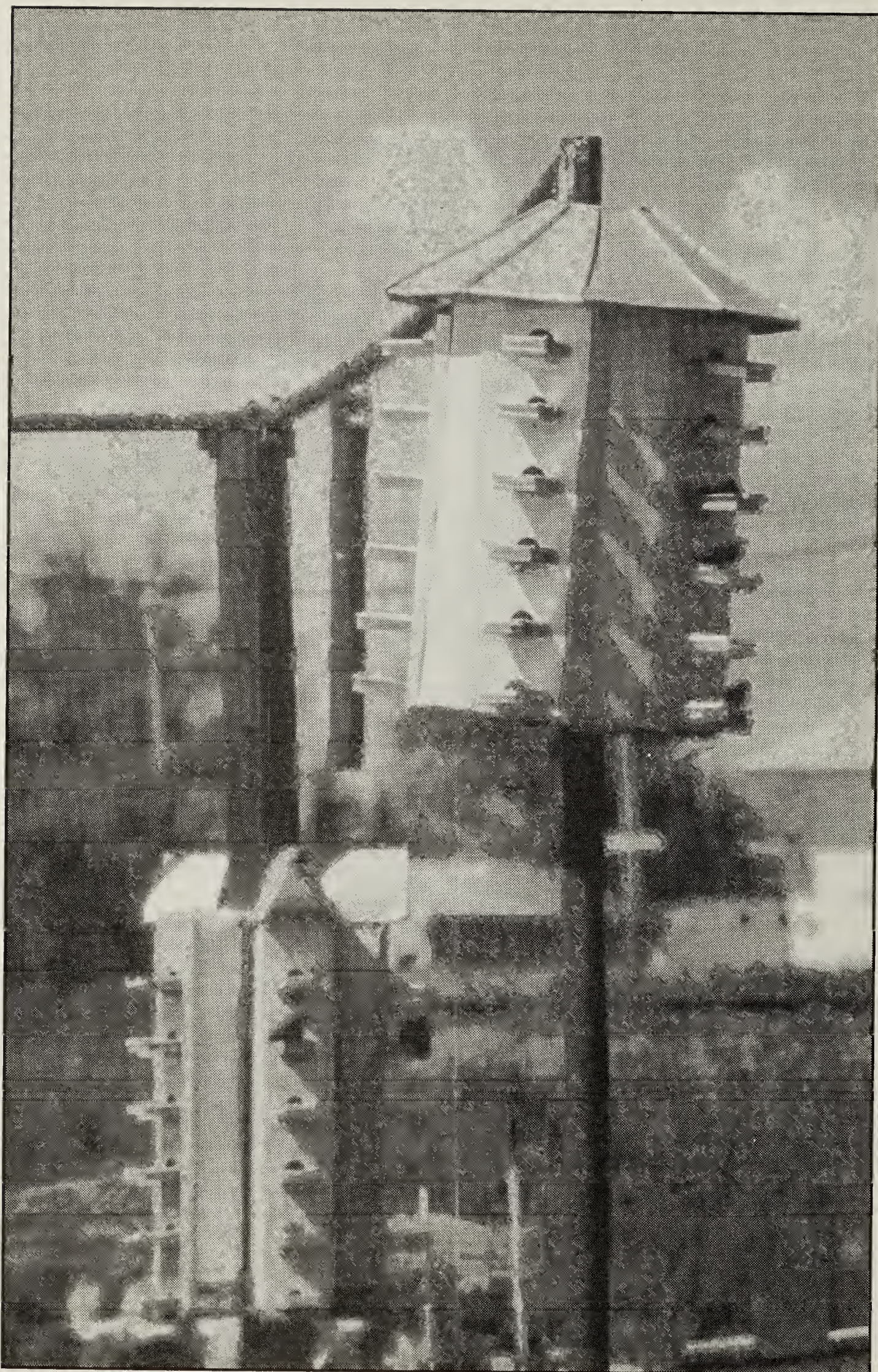
The editors would like to thank Danna Schock for providing the mystery photo and the information about Tiger Salamanders.





Looking west from the Whaleback Ridge area in Alberta.

Teresa Dolman



Purple Martin highrise near Prudhomme, SK.

George Tosh