

SASKATCHEWAN CHRISTMAS MAMMAL COUNT — 1994

Compiled by Wayne C. Harris, Box 414, Raymore, SK. S0A 3J0

The number of mammal counts conducted this year reached an all time high of 84, exceeding the 82 submitted in 1991. Furthermore, 95% of all bird counts being done now do mammal counts in conjunction with them. The number of species recorded was 42, up slightly from last year, but below the record 44 set in 1991.

A new species was added to the all-time list when Burke Korol and Robert Wapple found Mountain Lion tracks along the banks of the Saskatchewan River on the Gardiner Dam count. The tracks were believed to be those of an adult female accompanied by two almost fully grown young. Interestingly, a single adult was seen crossing a nearby road just over a month later, suggesting that the family unit had broken up by that time or that there was another animal in the vicinity. Although not new, two other cat species were also recorded. A set of Lynx tracks were found in the Cypress Hills on the Fort Walsh count, the first report of this species in a number of years. Bobcat tracks on the Grasslands National Park count combined with the Feral Cat found on the Gardiner Dam count means that all of the provinces free-roaming cats were seen.

The very mild weather left very poor conditions for finding mammal tracks throughout much of the southern portion of the province and in the southwest corner the complete absence of snow for the entire count period made things even worse there. As a result, for the very first time, two areas conducted mammal counts and reported no animals.

As usual, White-tailed Deer were the most frequently encountered mammal, followed closely (no pun!) by Coyotes. Rabbits were the next most frequent species as usual.

Generally, populations appear to be relatively stable. Both White-tailed and Mule Deer were similar to last year which is above the long-term average. White-tailed Jack Rabbit and Snowshoe Hare numbers were similar to last year but below the long-term average. Coyote numbers were noticeably up while Foxes were less common. Pronghorn numbers were much improved over last year, undoubtedly a reflection of the lack of snow throughout their range. In spite of the warm weather ground squirrels were hard to find and only one Black-tailed Prairie Dog was above ground in spite of the balmy weather. Muskrat populations were much improved after a couple of somewhat moister years which have

replenished their breeding habitat. Of note were twelve Elk on the Saskatoon count.

For weather, coverage and participants please refer to the Christmas Bird Count found elsewhere in this issue. Numbers appearing before the count location name in the tables refer to the location of the count on the map included with the bird count. In the tables, a numeral alone indicates that the mammals were actually seen, while a letter preceding the number means that the number was

inferred by the means defined below. A letter alone means that the species was present but it was either impossible to estimate the numbers or that no attempt was made to do so.

T = tracks

L = active lodge or hut

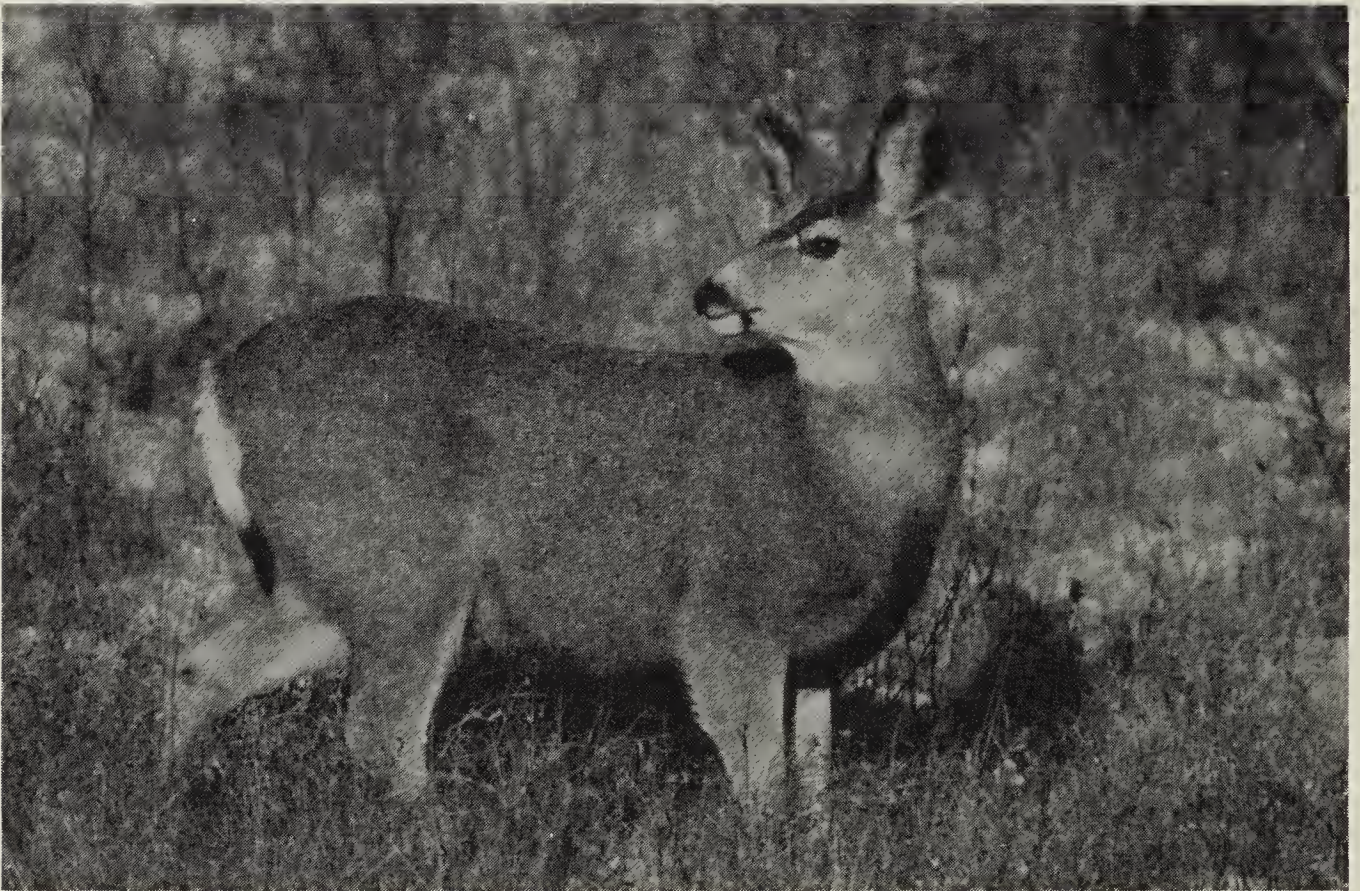
D = dead animal found

d = fresh diggings found

S = smell or odour

H = heard

+ = present during the count period (17 December to 2 January) but not found on count day.



Mule Deer, Alberta

Wayne Lynch

Table 1-1. SASKATCHEWAN CHRISTMAS MAMMAL COUNTS

LOCATION AND DATE												
1. ABERNETHY-KATEPWA LAKE 19 December 1994	2. ARMIT 31 December 1994	3. ASSINIBOIA 2 January 1995	4. BANGOR 26 December 1994	5. BETHUNE 2 January 1995	6. BIGGAR 29 December 1994	7. BIRCH HILLS 17 December 1994	8. CANDLE LAKE 20 December 1994	9. CHRISTOPHER LAKE 2 January 1995	10. CLARK'S CROSSING 17 December 1994	11. CORONACH 22 December 1994	12. CRAVEN 17 December 1994	SPECIES
2			2						T(2)			MASKED SHREW SHREW species NUTTALL'S COTTONTAIL COTTONTAIL species SNOWSHOE HARE
	T(1)	10	4		T(3)	T(54)	T(20)	T(3)	T(22)		T(6)	WHITE-TAILED JACK RABBIT RICHARDSON'S GROUND SQUIRREL BLACK-TAILED PRAIRIE DOG 6 GREY SQUIRREL FOX SQUIRREL
	3					1	17	8			H(7)	AMERICAN RED SQUIRREL NORTHERN FLYING SQUIRREL NORTHERN POCKET GOPHER AMERICAN BEAVER DEER MOUSE
	L(1) T(2)		1					L(1)	T(17)	1	T(12)	
	T(2)							L(8)		1		GAPPER'S RED-BACKED VOLE MUSKRAT MEADOW VOLE VOLE species MOUSE species
						T(8)		T(3)	T(16)		T(1)	
2	T(1) T(4)	12	7		T(3)	T(2) T(7)	T(1)		1	2 4	3	NORWAY RAT HOUSE MOUSE AMERICAN PORCUPINE COYOTE WOLF
	T(1)	12 9	1		T(2)	T(4)	T(1)	+	T(3)		T(2)	RED FOX RACCOON AMERICAN MARTEN FISHER ERMINE
	T(1)	2				T(5) T(1)						LONG-TAILED WEASEL LEAST WEASEL WEASEL species AMERICAN MINK AMERICAN BADGER
		3 10			T(1)	T(1)			T(5)	d(1)		
		3					T(1)					STRIPED SKUNK RIVER OTTER MOUNTAIN LION LYNX BOBCAT FERAL CAT
4	4 T(1) T(2)	14 47	6		2 32	2	2	T(2)	T(1) T(32)	6 2	1 8 T(9)	MULE DEER WHITE-TAILED DEER DEER species MOOSE AMERICAN ELK PRONGHORN
3	13	11	6	1	7	11	7	7	10	7	11	TOTAL SPECIES

Table 1-2. SASKATCHEWAN CHRISTMAS MAMMAL COUNTS

LOCATION AND DATE												
SPECIES	13. CROOKED LAKE 31 December 1994	14. CROOKED RIVER 24 December 1994	15. DUVAL 27 December 1994	16. EASTEND 2 January 1995	17. ENDEAVOUR 25 December 1994	18. FENTON 1 January 1995	19. FIFE LAKE 23 December 1994	20. FORT QU'APPELLE 17 December 1994	21. FORT WALSH 17 December 1994	22. GARDINER DAM 19 December 1994	23. GOOD SPIRIT LAKE 20 December 1994	24. GOVENLOCK 18 December 1994
MASKED SHREW									T(1)			
SHREW species									5	3		4
NUTTALL'S COTTONTAIL												
COTTONTAIL species												
SNOWSHOE HARE	T(2)		T(11)		T			2	T(4)	T(4)	T(20)	
WHITE-TAILED JACK RABBIT			T(2)	2	+			+	2	T(5)	T(4)	1
RICHARDSON'S GROUND SQUIRREL												1
BLACK-TAILED PRAIRIE DOG												
GREY SQUIRREL												
FOX SQUIRREL												
AMERICAN RED SQUIRREL	3				2	1		15	20		2	
NORTHERN FLYING SQUIRREL											2	
NORTHERN POCKET GOPHER								+				
AMERICAN BEAVER							1	1			+	
DEER MOUSE			1					2			1	1
GAPPER'S RED-BACKED VOLE											2	
MUSKRAT	L		L(4)					7			L(16)	1
MEADOW VOLE					5				2			
VOLE species												
MOUSE species	T		T(5)						T(7)	T(11)		
NORWAY RAT												
HOUSE MOUSE				2								
AMERICAN PORCUPINE			T(3)			D(1)	1	1	1	2	2	1
COYOTE		1	H(7)	1	T	1		1	8	7	1	1
WOLF												
RED FOX			T(2)						T(1)	T(1)	T(6)	
RACCOON				1								
AMERICAN MARTEN												
FISHER												
ERMINE					T(2)							
LONG-TAILED WEASEL												T(3)
LEAST WEASEL						+						
WEASEL species									T(2)			
AMERICAN MINK								3				
AMERICAN BADGER											T(2)	
STRIPED SKUNK	S		T(1)	1								
RIVER OTTER												
MOUNTAIN LION										T(3)		
LYNX									T(1)			
BOBCAT											1	
FERAL CAT												
MULE DEER				4			13	3	44	81		22
WHITE-TAILED DEER	4	T(4)	7	16	1	T(6)	11	+	38	82	T(35)	7
DEER species			T(10)									
MOOSE					T						T(2)	
AMERICAN ELK					T				T(30)			
PRONGHORN				6					+			24
TOTAL SPECIES	6	2	9	8	8	5	4	12	16	11	15	10

Table 1-3. SASKATCHEWAN CHRISTMAS MAMMAL COUNTS

LOCATION AND DATE												
25. GRASSLANDS N. P. 20 December 1994	26. GRASSLANDS N.P. (NW) 23 December 1994	27. GRAYSON 25 December 1994	28. HUDSON BAY 20 December 1994	29. HUMBOLDT 26 December 1994	30. HUMBOLDT W. 26 December 1994	31. INDIAN HEAD 22 December 1994	32. KAMSACK 26 December 1994	33. KELVINGTON 31 December 1994	34. KENASTON 19 December 1994	35. KILWINNING 19 December 1994	36. KINDERSLEY 26 December 1994	SPECIES
2	1				1	T(1)						MASKED SHREW SHREW species NUTTALL'S COTTONTAIL COTTONTAIL species
				2		2	38	T(36)	3		1	SNOWSHOE HARE
1	T(1)			T		4		T(6)	T(10)			WHITE-TAILED JACK RABBIT RICHARDSON'S GROUND SQUIRREL BLACK-TAILED PRAIRIE DOG GREY SQUIRREL FOX SQUIRREL
			2			11				2		AMERICAN RED SQUIRREL NORTHERN FLYING SQUIRREL NORTHERN POCKET GOPHER AMERICAN BEAVER DEER MOUSE
		2	L(8)				L					GAPPER'S RED-BACKED VOLE MUSKRAT MEADOW VOLE VOLE species MOUSE species
1						T(1)		T(3)	L	T		
1								T(1)				NORWAY RAT HOUSE MOUSE AMERICAN PORCUPINE
21	12	1	+	T(1) T		8	H	T(3)	1	1	2	COYOTE WOLF
			+	T		1 3	1	T(2)	1		+	RED FOX RACCOON AMERICAN MARTEN FISHER ERMINE
				T(1)		1		T(5)	T(1)			LONG-TAILED WEASEL LEAST WEASEL WEASEL species AMERICAN MINK AMERICAN BADGER
									d(1)			
T(1)							1		T(1)			STRIPED SKUNK RIVER OTTER MOUNTAIN LION LYNX BOBCAT FERAL CAT
68 37	56 10		+			29	67	T(3) T(17)	1		+	MULE DEER WHITE-TAILED DEER DEER species MOOSE AMERICAN ELK PRONGHORN
156	136						6 60			T(6)		
9	6	2	5	7	1	10	9	9	12	1	4	TOTAL SPECIES

Table 1-4. SASKATCHEWAN CHRISTMAS MAMMAL COUNTS

	LOCATION AND DATE											
SPECIES	37. KINLOCH 23 December 1994	38. KUTAWAGAN LAKE 27 December 1994	39. LARONNE 26 December 1994	40. LAST MOUNTAIN L. N.W.A 26 December 1994	41. LEADER (North) 26 December 1994	42. LEADER (South) 31 December 1994	43. LUSELAND 26 December 1994	44. MACDCWALL 2 January 1995	45. MATADOR 27 December 1994	46. MCMAHON LAKES 20 December 1994	47. MEADCW LAKE 26 December 1994	48. MELFORT (A) 26 December 1994
MASKED SHREW				1								
SHREW species					1				1			
NUTTALL'S COTTONTAIL												
COTTONTAIL species												
SNOWSHOE HARE	T(20)	2	T(6)					T(3)		T(15)		
WHITE-TAILED JACK RABBIT				T(7)	3		+	T(1)				
RICHARDSON'S GROUND SQUIRREL												
BLACK-TAILED PRAIRIE DOG												
GREY SQUIRREL												
FOX SQUIRREL												
AMERICAN RED SQUIRREL	T(5)		5							2	4	
NORTHERN FLYING SQUIRREL												
NORTHERN POCKET GOPHER												
AMERICAN BEAVER	L(3)			L(1)								1
DEER MOUSE							+					
GAPPER'S RED-BACKED VOLE											1	
MUSKRAT	L(10)			L(76)								
MEADOW VOLE	1			D(3)								
VOLE species			T(6)									
MOUSE species					1			T(3)				7
NORWAY RAT												
HOUSE MOUSE												
AMERICAN PORCUPINE	1	2		T(2)	1							
COYOTE	H(1)	4		3	2		2	T(3)	2			1
WOLF										T(1)		
RED FOX		1	T(3)	T(1)				T(6)		T(11)		
RACCOON												
AMERICAN MARTEN										T(2)		
FISHER										T(1)		
ERMINE			T(4)	T(2)								
LONG-TAILED WEASEL												
LEAST WEASEL								T(3)				
WEASEL species	T(5)				1							
AMERICAN MINK	T(1)		T(6)	T(1)								
AMERICAN BADGER		d(1)		d(2)	T(1)							
STRIPED SKUNK				S(1)								
RIVER OTTER										T(1)		
MOUNTAIN LION												
LYNX												
BOBCAT												
FERAL CAT												
MULE DEER		7			5	2	2		41			
WHITE-TAILED DEER	T(20)	4		38	7			T(3)	4			
DEER species												
MOOSE										1		
AMERICAN ELK	T(30)											
PRONGHORN				31								
TOTAL SPECIES	11	7	6	14	9	1	4	7	4	8	2	3

Table 1-5. SASKATCHEWAN CHRISTMAS MAMMAL COUNTS

LOCATION AND DATE												
49. MELFORT (B) 30 December 1994	50. MELVILLE 26 December 1994	51. MOOSE JAW 26 December 1994	52. MOOSE MOUNTAIN 22 December 1994	53. NAICAM 29 December 1994	54. NICOLLE FLATS 2 January 1995	55. PADDCKWOOD 26 December 1994	56. PIKE LAKE 2 January 1995	57. PRINCE ALBERT (A) 2 January 1995	58. PRINCE ALBERT (B) 18 December 1994	59. PRINCE ALBERT N.P. 18 December 1994	60. QU'APPELLE VALLEY DAM 18 December 1994	SPECIES
2				T(1)	1		T(13)			T(3)	T(20)	MASKED SHREW SHREW species NUTTALL'S COTTONTAIL COTTONTAIL species SNOWSHOE HARE
		2					T(1)		T			WHITE-TAILED JACK RABBIT RICHARDSON'S GROUND SQUIRREL BLACK-TAILED PRAIRIE DOG GREY SQUIRREL FOX SQUIRREL
		5	9	H(2)					2	16		AMERICAN RED SQUIRREL NORTHERN FLYING SQUIRREL NORTHERN POCKET GOPHER AMERICAN BEAVER DEER MOUSE
T(3)	L(1)											GAPPER'S RED-BACKED VOLE MUSKRAT MEADOW VOLE VOLE species MOUSE species
	L(7)						T(2)			T(5) T(5)		NORWAY RAT HOUSE MOUSE AMERICAN PORCUPINE COYOTE WOLF
+			1		3		4	1 +		T(1) T(1) 4	8	RED FOX RACCOON AMERICAN MARTEN FISHER ERMINE
								+	T	2	+	LONG-TAILED WEASEL LEAST WEASEL WEASEL species AMERICAN MINK AMERICAN BADGER
1						T(2)	T(1) T(1)			T(1) T(1)		STRIPED SKUNK RIVER OTTER MOUNTAIN LION LYNX BOBCAT FERAL CAT
				S(1)			1			+	1	
						T(1)				6		
1	T(7)	12		3	15 15	15	5	+	T	T(13)	23 7	MULE DEER WHITE-TAILED DEER DEER species MOOSE AMERICAN ELK PRONGHORN
										1 25		
5	4	3	2	4	4	3	9	4	4	17	7	TOTAL SPECIES

Table 1-6. SASKATCHEWAN CHRISTMAS MAMMAL COUNTS

LOCATION AND DATE												
SPECIES	61. RAYMORE 25 December 1994	62. REGINA 26 December 1994	63. ROUND LAKE 27 December 1994	64. SALTCOATS 24 December 1994	65. SASK. LANDING P.P. 28 December 1994	66. SASKATOON 26 December 1994	67. SCOTT 30 December 1994	68. SHAMROCK 27 December 1994	69. SKULL CREEK 26 December 1994	70. SNOWDEN 30 December 1994	71. SPALDING 26 December 1994	72. SPINNEY HILL 27 December 1994
MASKED SHREW	2											1
SHREW species											T	
NUTTALL'S COTTONTAIL					1				26			
COTTONTAIL species												
SNOWSHOE HARE	T(7)	T(4)	T	T(9)		9			1		T	
WHITE-TAILED JACK RABBIT	1	6	T			8	T(2)	1	2			
RICHARDSON'S GROUND SQUIRREL									2			
BLACK-TAILED PRAIRIE DOG												
GREY SQUIRREL											T(1)	
FOX SQUIRREL		+										
AMERICAN RED SQUIRREL	1	4	5						2	3		2
NORTHERN FLYING SQUIRREL										+		
NORTHERN POCKET GOPHER												
AMERICAN BEAVER		L(1)	2		L(1)	1						
DEER MOUSE	4	T(15)	T			T(2)						
GAPPER'S RED-BACKED VOLE	1					1						
MUSKRAT	L(4)		9	T(3)		1						
MEADOW VOLE	1	T(1)							3	T(2)		
VOLE species	T(8)	T				T(1)					T	
MOUSE species	T(10)	T	T			1	T(1)			T(5)	T	
NORWAY RAT	T(2)											
HOUSE MOUSE	T(1)											
AMERICAN PORCUPINE	3	T(1)		T(5)	1	1			7		T(1)	
COYOTE	10	2		T(2)	1	7	T(1)		10		T	1
WOLF												
RED FOX	1	6		T(2)		3	1					
RACCOON									3			
AMERICAN MARTEN												
FISHER												
ERMINE	T(2)											
LONG-TAILED WEASEL			T						2			
LEAST WEASEL												1
WEASEL species	T(4)	1		T(5)		T(1)				+	T(1)	
AMERICAN MINK			1	T(1)	T(1)	1			+			
AMERICAN BADGER	d(1)								2			
STRIPED SKUNK		S(1)							2			
RIVER OTTER												
MOUNTAIN LION												
LYNX												
BOBCAT												
FERAL CAT												
MULE DEER			+		28	T(1)	T(3)		10			
WHITE-TAILED DEER	7	33	7	T(75)	37	50	T(4)	2	23	2	T	
DEER species	T(13)	T				T(1)						
MOOSE											T(1)	
AMERICAN ELK						12				15		
PRONGHORN					15							
TOTAL SPECIES	16	13	10	8	8	14	6	2	15	6	11	4

Table 1-7. SASKATCHEWAN CHRISTMAS MAMMAL COUNTS

LOCATION AND DATE										TOTAL COUNT	SPECIES
73. SQUAW RAPIDS 23 December 1994	74. SWIFT CURRENT 18 December 1994	75. TISDALE 26 December 1994	76. TURTLE LAKE (A) 1 January 1995	77. TURTLE LAKE (B) 30 December 1994	78. WAKAW LAKE 22 December 1994	79. WEYBURN 17 December 1994	80. WHITE BEAR 27 December 1994	81. WHITE WOOD 18 December 1994	82. YORKTON 28 December 1994		
T	2					T(1)	T(2)	T(1)		4	MASKED SHREW
T(2)				T				3	T	7	SHREW species
										13	NUTTALL'S COTTONTAIL
										1	COTTONTAIL species
										41	SNOWSHOE HARE
T(2)	1	1				T(44)	T(2)	T(1)	T	40	WHITE-TAILED JACK RABBIT
	1					1				2	RICHARDSON'S GROUND SQUIRREL
										1	BLACK-TAILED PRAIRIE DOG
										5	GREY SQUIRREL
										3	FOX SQUIRREL
17			1	2	2			2		33	AMERICAN RED SQUIRREL
L(4)										2	NORTHERN FLYING SQUIRREL
T(2)						T(21)	T	T(3)		1	NORTHERN POCKET GOPHER
										17	AMERICAN BEAVER
										19	DEER MOUSE
L(1)				T				1		4	GAPPER'S RED-BACKED VOLE
						T(8)				18	MUSKRAT
T				T				T(4)		13	MEADOW VOLE
										8	VOLE species
										25	MOUSE species
T(2)	1		2			T(2)		+		2	NORWAY RAT
T(1)	T(1)		4			1	T(3)	D(1)		4	HOUSE MOUSE
T(1)							5	1		32	AMERICAN PORCUPINE
										59	COYOTE
										4	WOLF
1			5			1		2		38	RED FOX
										4	RACCOON
										2	AMERICAN MARTEN
										2	FISHER
										5	ERMINE
T(1)		1								11	LONG-TAILED WEASEL
T(2)	1			T(1)						7	LEAST WEASEL
										16	WEASEL species
										17	AMERICAN MINK
							T(1)			10	AMERICAN BADGER
T(1)			4							14	STRIPED SKUNK
										5	RIVER OTTER
										1	MOUNTAIN LION
										1	LYNX
										1	BOBCAT
										1	FERAL CAT
3	2		5			+	128			30	MULE DEER
T(10)	11		50	2		8		37	T	66	WHITE-TAILED DEER
T(4)			2							6	DEER species
T(30)										10	MOOSE
										9	AMERICAN ELK
										9	PRONGHORN
17	8	2	8	6	1	11	7	11	3		TOTAL SPECIES