

NEW BLUEBIRD TRAIL

I would like to report on the success of a "Bluebird Box Trail" that we placed in Douglas Park this spring. We placed 19 boxes in the park and I am happy to report a 98% occupancy by bluebirds and Tree Swallows.

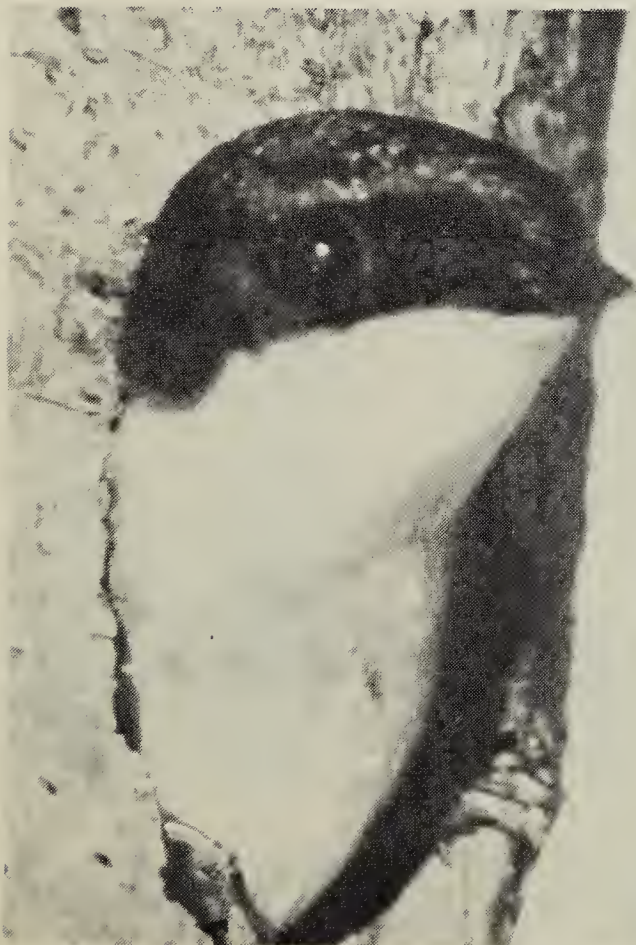
Below is a detailed list of the boxes and their occupancy. I hope to be able to return to check the hatching of swallow eggs. Another year we'll have to do our checking a little later.

I was delighted with the results and will endeavour to place more boxes next year. I operate a Home for Mentally Handicapped Adults, and it was a real learning experience for us all.

JUNE 18 CHECK OF NEST BOX TRAIL IN DOUGLAS PARK

Box No.	Contents
1	1 dead swallow (adult)
2	6 Tree Swallow eggs
3	2 Tree Swallows hatched + 4 eggs
4	3 Tree Swallow eggs
5	4 Tree Swallow eggs (swallow stayed sitting)
6	6 Tree Swallow eggs
7	5 Tree Swallow eggs
8	7 bluebirds hatched and feathered
9	empty
10	6 Tree Swallow eggs
11	5 bluebirds + 1 egg
12	5 bluebirds
13	3 Tree Swallow eggs
14	5 bluebirds
15	3 swallow eggs seen (bird sitting on the nest)
16	5 bluebird eggs
17	6 Tree Swallow eggs
18	7 Tree Swallow eggs
19	7 Tree Swallow eggs

— *Brenda D. Winch*, Box 65, Ernfold, Saskatchewan.



Tree Swallows.



Robert J. Long