

SASKATCHEWAN CHRISTMAS MAMMAL COUNT — 1982

Compiled by WAYNE C. HARRIS, Box 414, Raymore, Saskatchewan. S0A 3J0

A total of 49 counts were received this year reporting 28 species during the count period. The number of counts exceeds the previous high of 45 in 1980 while the number of species equals the previous high reported in 1978 and 1980. General light snow cover combined with very mild temperatures throughout the count period are undoubtedly the reason for the increase in counts.

Two new species were reported this year. A Flying Squirrel was seen at Waskesiu in Prince Albert National Park and at Good Spirit Lake, Bill and Joyce Anaka found fresh Northern Pocket Gopher diggings.

Rabbit populations appear to be down with both frequency and overall numbers less than last year for White-tailed Jack Rabbit and especially Snowshoe Hare. Coyote populations are up as are White-tailed Deer. Mild weather is undoubtedly responsible for the increased activity of such species as Striped Skunk and Badger. A new mammal detection device was initiated this year by Alan Smith when he used

an extra sensory perceptive nose to locate a Striped Skunk on the Elbow count!

The only species which was expected but not reported was the Lynx. With Snowshoe Hare numbers declining in the forest the Lynx usually becomes more mobile and is recorded in the southern portions of the province — maybe next year.

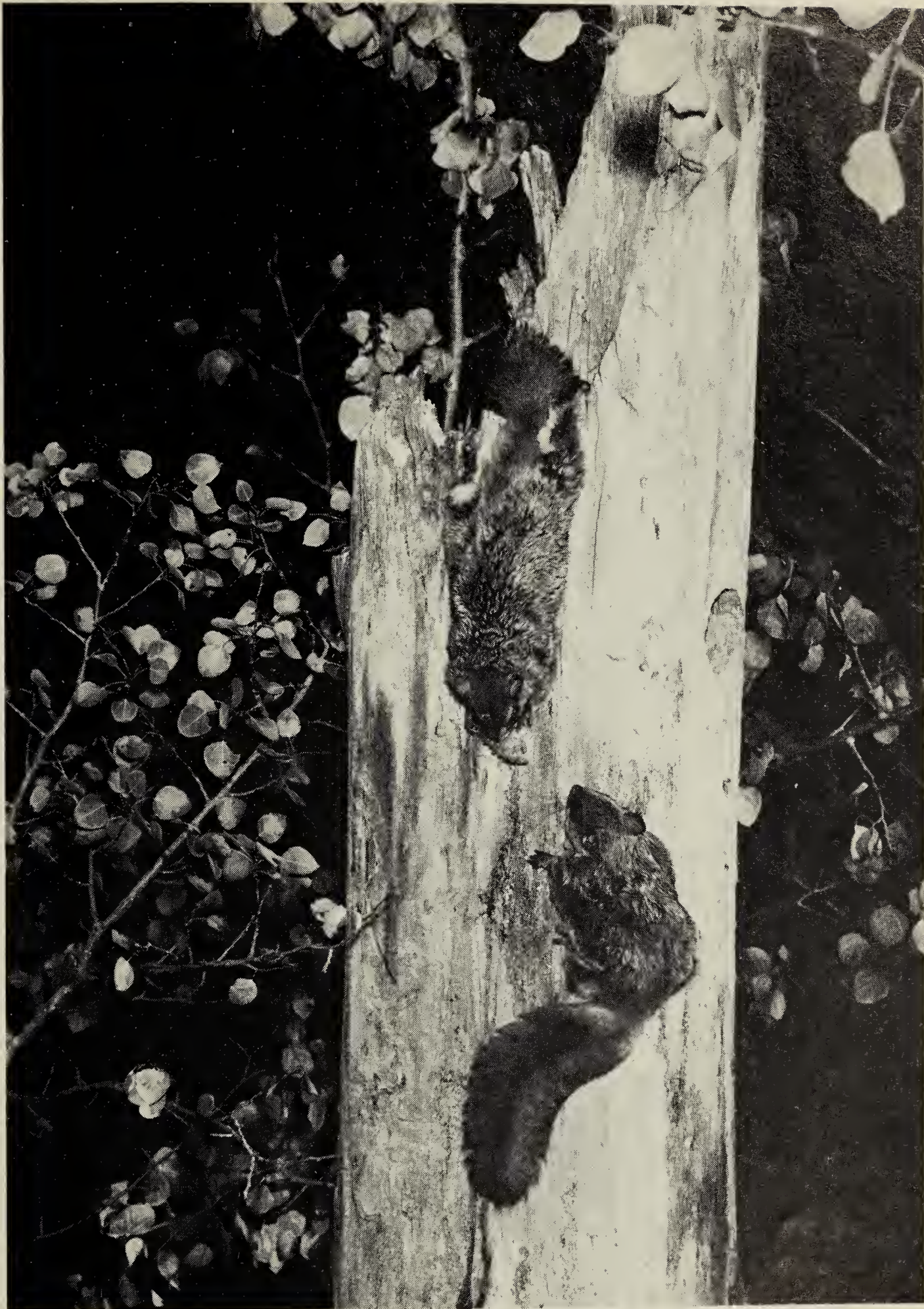
For weather, coverage and participants on these counts please refer to the Christmas Bird Counts found elsewhere in this issue. Symbols found in the table are as follows:

- * Identified by tracks with estimated number of individuals in parentheses.
- + Seen during count period but not on count day.
- L Active lodges seen with number in parentheses.
- H Species heard but not seen with number in parentheses.
- S Presence indicated by smell with number in parentheses.
- D Fresh diggings located.



Skunk in snow

A. Schmidt



Northern Flying Squirrels

Hans Dommasch

Table 1-1. SASKATCHEWAN CHRISTMAS MAMMAL COUNT.

SPECIES	LOCALITY	ASSINIBOIA December 29	BIGGAR December 21	BIG GULLY CREEK December 30	BIRCH HILLS December 18	BROADVIEW January 1	CROOKED LAKE December 24	ELBOW December 19	ENDEAVOUR December 26	FORT QU'APPELLE December 18	FORT WALSH December 18
SHREW species											
RACCOON		3									
RED FOX				*			2		*(1)	*	
COYOTE				3	*(1)	*(9)	*(1)	H(2)	*(5)		3
TIMBER WOLF											
ERMINE							*(2)				
LEAST WEASEL						*(1)			*		
LONG-TAILED WEASEL						*(9)					
WEASEL species				*						*	*(3)
MINK				*		*(4)	*(1)		*(4)	+	1
RIVER OTTER											
STRIPED SKUNK								S(1)			1
BADGER											1
WHITE-TAILED JACK RABBIT		10	*(2)	3		*(4)	*(7)		2		4
SNOWSHOE HARE		3	*(1)	1	*(7)	*(20)	4	1	2	*	1
NUTTALL'S COTTONTAIL											
RED SQUIRREL				7	5	5	5		5	3	60
NORTHERN FLYING SQUIRREL											
NORTHERN POCKET GOPHER											
BEAVER											
MEADOW VOLE											8
VOLE species											
DEER MOUSE											
MOUSE species				*		*(12)	*(4)	9			3
MUSKRAT								1		2	
PORCUPINE				1			*(1)				
ELK											4
MULE DEER				4							6
WHITE-TAILED DEER		2	*(5)	*	*(1)	*(20)	*(8)		*(5)	*	23
DEER species											
MOOSE									*(2)		*
PRONGHORN											
TOTAL SPECIES		4	3	11	4	9	10	5	9	7	13

Table 1-2. SASKATCHEWAN CHRISTMAS MAMMAL COUNT.

GARDINER DAM December 20	GOOD SPIRIT LAKE December 19	GOVENLOCK December 19	HARRIS December 30	HUMBOLDT December 26	INDIAN HEAD December 19	KELVINGTON December 18	KELVINGTON January 2	KENASTON December 26	KINDERSLEY December 26	LOCALITY	SPECIES
	*(1)										SHREW species
											RACCOON
		2		*(3)	*(1)	*(1)	*(1)	*			RED FOX
2	*(2)	2		*(2)	9	*(1)		2	+		COYOTE
											TIMBER WOLF
											ERMINE
											LEAST WEASEL
				*(1)	2	*(1)					LONG-TAILED WEASEL
	*(1)	1									WEASEL species
	*(1)				3						MINK
											RIVER OTTER
											STRIPED SKUNK
		1						*(1)			BADGER
1	1	27	1	*(6)	2		+	+	2		WHITE-TAILED JACK RABBIT
4	*(10)			*(8)	13			*(4)			SNOWSHOE HARE
1		1									NUTTALL'S COTTONTAIL
1	*(5)			*(1)	8		1				RED SQUIRREL
											NORTHERN FLYING SQUIRREL
	D(1)										NORTHERN POCKET GOPHER
	L(1)										BEAVER
3											MEADOW VOLE
		1									VOLE species
											DEER MOUSE
	*(4)	1	*(4)			*(3)					MOUSE species
		1									MUSKRAT
*(1)	*(4)			*(1)							PORCUPINE
											ELK
16		49									MULE DEER
16	*(20)		5	*(6)	29	*(3)		*(2)			WHITE-TAILED DEER
		2									DEER species
											MOOSE
									2		PRONGHORN
9	12	9	3	8	8	5	3	6	3		TOTAL SPECIES

Table 1-3. SASKATCHEWAN CHRISTMAS MAMMAL COUNT.

SPECIES	LOCALITY	KUTAWAGAN LAKE December 23	LA RONGE December 26	LAST MOUNTAIN LAKE December 26	LEADER December 31	LOVE-TORCH RIVER December 31	LUSELAND December 26	MAIDSTONE BRIDGE December 29	MELFORT December 19	MOOSE JAW December 26	NAICAM December 26
SHREW species							*				
RACCOON											
RED FOX		*					1				*
COYOTE		*		*	*(1)		3	1		5	1
TIMBER WOLF											
ERMINE							*				
LEAST WEASEL									1	1	
LONG-TAILED WEASEL							*	*(1)		4	*
WEASEL species		*	*(1)	*(3)							
MINK				*(1)						2	
RIVER OTTER											
STRIPED SKUNK											
BADGER		*									
WHITE-TAILED JACK RABBIT		7		18	1		2	*		44	
SNOWSHOE HARE			*(4)	*			*	*	1	6	*
NUTTALL'S COTTONTAIL											
RED SQUIRREL			2			2			2		1
NORTHERN FLYING SQUIRREL											
NORTHERN POCKET GOPHER											
BEAVER											
MEADOW VOLE							*				
VOLE species											
DEER MOUSE											
MOUSE species			*(3)				*	*		7	*
MUSKRAT											
PORCUPINE		2					*	1			
ELK											
MULE DEER					3		*				
WHITE-TAILED DEER		*		*	8	6	*	2		8	*
DEER species											
MOOSE											
PRONGHORN											
TOTAL SPECIES		7	4	6	4	2	11	7	3	8	7

Table 1-4. SASKATCHEWAN CHRISTMAS MAMMAL COUNT.

NIPAWIN December 31	NISBET FOREST December 29	RAYMORE December 21	REGINA December 27	ROSE VALLEY December 24	ST. WALBURG December 26	SASKATCHEWAN FORKS December 19	SASKATOON December 27	SCOTT December 28	SEMANS December 29	LOCALITY	SPECIES
		*									SHREW species
											RACCOON
		*		*			2		*(2)		RED FOX
	*(2)	*	*(1)	*	5	2	2		*(1)		COYOTE
											TIMBER WOLF
		1									ERMINE
											LEAST WEASEL
									*(4)		LONG-TAILED WEASEL
	*(3)	*(7)	*(1)				*(10)		*(2)		WEASEL species
											MINK
											RIVER OTTER
		*(1)									STRIPED SKUNK
											BADGER
		7	25				3	*(3)	*(21)		WHITE-TAILED JACK RABBIT
	*(20)	*		*	11	*(9)	2	1			SNOWSHOE HARE
											NUTTALL'S COTTONTAIL
1	8	H(1)		1			1				RED SQUIRREL
											NORTHERN FLYING SQUIRREL
											NORTHERN POCKET GOPHER
											BEAVER
			1								MEADOW VOLE
											VOLE species
			1								DEER MOUSE
	*(1)	*	*(1)	*	5	*(2)			*(6)		MOUSE species
											MUSKRAT
		*(2)							*(1)		PORCUPINE
											ELK
											MULE DEER
	3	8	*(1)		9	*(2)	10	*(5)	*(4)		WHITE-TAILED DEER
											DEER species
											MOOSE
											PRONGHORN
1	6	11	6	5	4	4	7	3	7		TOTAL SPECIES

Table 1-5. SASKATCHEWAN CHRISTMAS MAMMAL COUNT.

SPECIES	LOCALITY									TOTAL NUMBER OF COUNTS PER SPECIES OR GROUP
	SKULL CREEK December 26	SPRING VALLEY January 1	SQUAW RAPIDS December 24	TISDALE December 25	WASKESIU December 20	WEBB December 20	WHITE BEAR January 2	WHITEBEECH January 1	WOLSELEY SOUTH December 31	
SHREW species		+	*							5
RACCOON										1
RED FOX	*(1)	2	*(1)		6					21
COYOTE	*	1	1	4			*(6)	*(1)		36
TIMBER WOLF			*		*(2)					2
ERMINE										3
LEAST WEASEL							*(1)			5
LONG-TAILED WEASEL	2	*(1)					*(1)			12
WEASEL species	1		*(1)		*			*(1)		17
MINK	*(4)	+	*(2)		*(2)					14
RIVER OTTER			*(2)		*(2)					2
STRIPED SKUNK	*(1)									4
BADGER		+								5
WHITE-TAILED JACK RABBIT	6	2	*	10		*(21)	1	+	1	35
SNOWSHOE HARE			*(2)		*			*(3)		32
NUTTALL'S COTTONTAIL	2					1	*(6)			5
RED SQUIRREL			13		2			*(2)		24
NORTHERN FLYING SQUIRREL					1					1
NORTHERN POCKET GOPHER										1
BEAVER			L(1)			*(1)				3
MEADOW VOLE	*					+				5
VOLE species										1
DEER MOUSE										1
MOUSE species		*			*					23
MUSKRAT			1							4
PORCUPINE	*(2)		*(1)			*(1)	*(1)			14
ELK			*		6			*(1)		4
MULE DEER	*	3				26	22			10
WHITE-TAILED DEER	7	2	9		1	6		*(20)	*(5)	39
DEER species										1
MOOSE			*(2)		*					4
PRONGHORN						+				2
TOTAL SPECIES	11	10	16	2	12	8	7	7	2	