

NYMPHALIDAE:

Limenitis arthemis arthemis (Drury), *Limenitis archippus archippus* (Cramer), *Vanessa atalanta rubria* (Fruhstorfer), *Nymphalis j-album j-album* (Boisduval & LeConte), *Nymphalis antiopa antiopa* (Linnaeus), *Nymphalis milberti milberti* (Godart), *Polygonia satyrus neomarsyas* dos Passos, *Polygonia faunus faunus* (Edwards), *Polygonia comma* (Harris), *Polygonia progné* (Cramer), *Phyciodes tharos* (Drury) ssp., *Phyciodes batesii* (Reakirt), *Boloria selene atrocotalis* (Huard), *Boloria bellona toddi* (Holland), *Boloria titania grandis* (Barnes & McDunnough), *Speyeria atlantis atlantis* (Edwards), *Speyeria cybele* (Fabricius) ssp.

LYCAENIDAE:

Harkenclenus titus titus (Fabricius), *Satyrium liparops fletcheri* (Michener & dos Passos), *Lycaena epixanthe*

(Boisduval & LeConte) ssp., *Lycaena helloides* Boisduval, *Everes comyntas comyntas* (Godart), *Glaucopsyche lygdamus couperi* (Grote), *Celastrina argiolus pseudargiolus* (Boisduval & LeConte).

The first two weeks of August, usually a poor time to study Lepidoptera in Manitoba, produced exceptional results for me at the Northwest Angle Forest. *Nymphalis j-album* and *Polygonia faunus* congregate in large numbers at roadside puddles; *Boloria titania grandis* was taken at roadside puddles and at flowers bordering bogs in better numbers than I have ever encountered it elsewhere; *Pieris napi* and *Cercyonis pegala* were frequently seen in the edges of wooded areas; *Harkenclenus titus*, *Satyrium liparops* and worn *Speyeria atlantis* covered flowers along the roadsides; and collecting in bogs produced numbers of *Lycaena epixanthe* plus worn examples of *Lethe eurydice*.

MAMMALS OF THE HAND HILLS FORMATION OF SOUTHERN ALBERTA: PRELIMINARY FAUNAL LIST

by John E. Storer, Provincial Museum and Archives of Alberta, Edmonton

The Hand Hills, south-central Alberta's highest topographic feature, rise to an altitude of 3,500 feet at their northwestern edge, and stand about 700 feet above the prairie. Located about 15 miles east of Drumheller, the hills are remnants of an ancient plateau, long since uplifted and dissected by erosion.

The age of the Hand Hills Conglomerate, which lies at the summit of the Hand Hills, in townships 29 and 30, ranges 16 and 17 west of the 4th meridian, has long posed a problem. Until recently, the horse astragalus reported by L. S. Russell (A horse astragalus from the Hand Hills conglomerate of Alberta. Nat. Mus. Can., Nat. Hist. Papers, No. 1.

1958) was the only identifiable fossil recovered from the deposit. Russell's find pertains to an advanced type of horse, probably *Equus*, and demonstrates that the Hand Hills Conglomerate must be in part Blancan (latest Pliocene — earliest Pleistocene) or younger.

Collections made in 1970 and 1971 by the University of Alberta and Provincial Museum and Archives of Alberta have added to the known fauna of the Hand Hills Formation, and fossil mammals of two different ages are now known. A preliminary faunal list of the two components, one uppermost Miocene or lowermost Pliocene, and the other Irvingtonian (middle Pleistocene) or later, follows. A more thorough account is in preparation.

*Natural History Contribution No. 10 of the Provincial Museum and Archives of Alberta.

Uppermost Miocene or lowermost Pliocene

Order Perissodactyla

Family Equidae

Merychippus sp.

Order Artiodactyla

Family Camelidae

Camelidae, gen. et sp. *indet.*

Order Rodentia

Family Sciuridae

Sciuridae, gen. et sp. *indet.*

Family Cricetidae

Peromyscus sp.

Family Eomyidae

Adjidaumo cf. *A. russelli*

Irvingtonian or later

Order Proboscidea

Family Elephantidae

Elephantidae, gen. et sp. *indet.*

Order Perissodactyla

Family Equidae

Equus cf. *E. conversidens*

Order Rodentia

Family Sciuridae

Spermophilus cf. *S. richardsonii*

Family Cricetidae

Microtus cf. *M. pennsylvanicus*

Family Geomyidae

Geomys sp.

Order Lagomorpha

Family Leporidae

Leporidae, gen. et sp. *indet.*

Fossils from the Miocene-Pliocene portion of the deposit have not been reported previously, whereas the Irvingtonian or later date attached to the Pleistocene portion is far later than the previously accepted Blancan date.

CANADA LYNX IN REGINA, APRIL, 1972

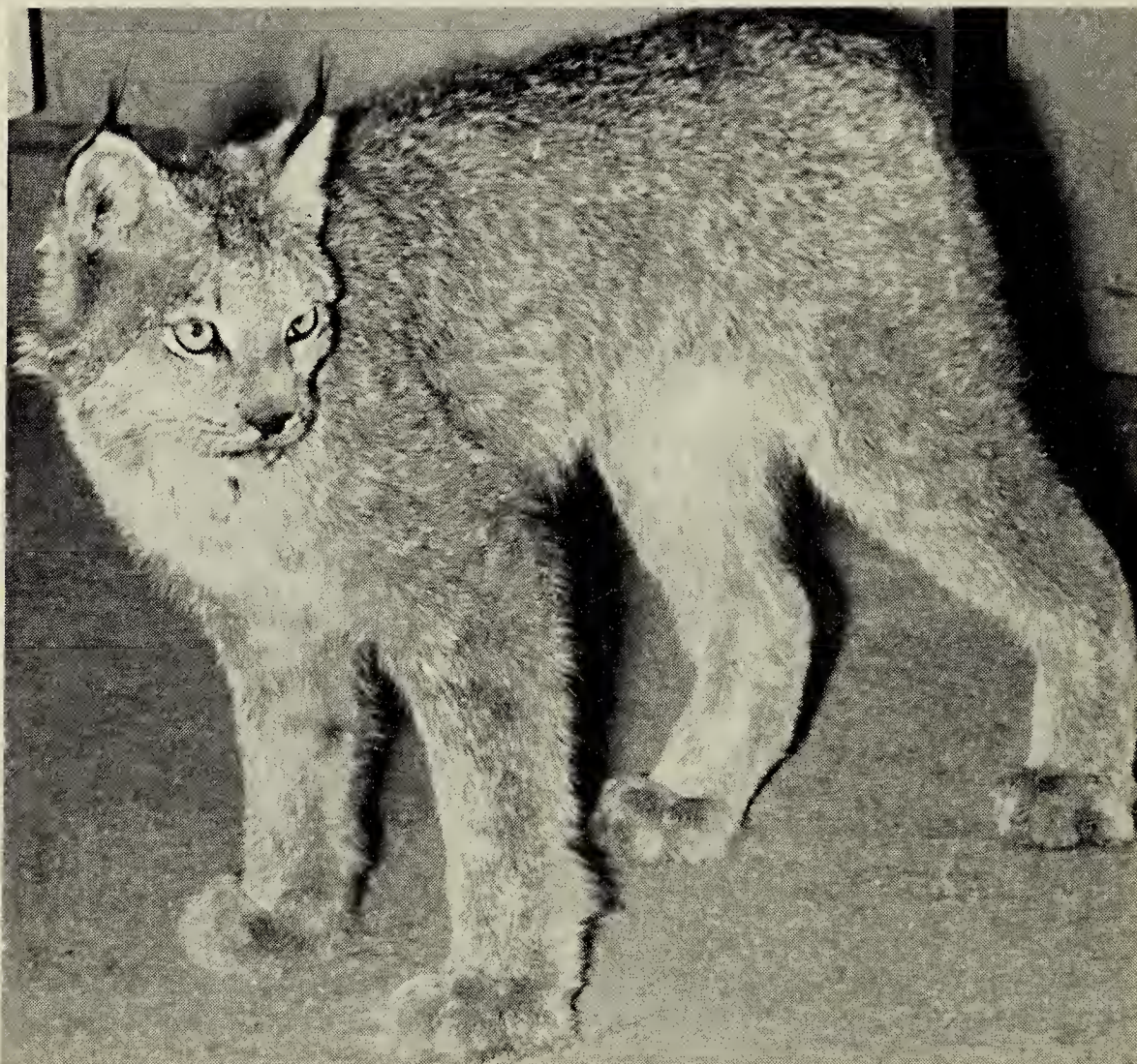


Photo by Roy Antal, Leader-Post, Regina

The above photograph of a two-foot-high Canada Lynx was taken April 21, 1972 at the Humane Society animal shelter, Albert Street and Armour Road, Regina. The animal, which had been hit by a car in the Whitmore Park area of Regina was released later in the Qu'Appelle Valley by the Department of Natural Resources. At least one other Canada Lynx came into the city of Regina in late winter, 1971 - 72.