

in a hen house. This record and previous records for Strasbourg and Saskatoon (see **Blue Jay**, 16: 33-35) are believed to represent introduced animals, the normal range of the Gray Squirrel being far to the southeast. Some indication of the possibility of further records has just been received from Ralph Stueck, Abernethy. He reports that three captive Gray Squirrels (obtained from Ontario) escaped during the winter from his home.

EDITOR'S NOTE: The list of references used in the article by R. W. Nero on the Gray squirrel (*Blue Jay*, 16:33-35) was inadvertently omitted in the last issue. Literature cited for that article included:

- ANDERSON, R. M., 1946.—Catalogue of Canadian Recent Mammals. Nat. Mus. Can. Bull. No. 102.
- DE VOS, A., R. H. MANVILLE and R. G. VANGELDER. 1956.—Introduced mammals and their influence on native biota. *Zoologica* 41:163-194.
- HIBBARD, E. A. 1956.—Range and spread of the Gray and Fox Squirrels in North Dakota. *Journ. Mamm.*, 37:525-531.

“Gophers”

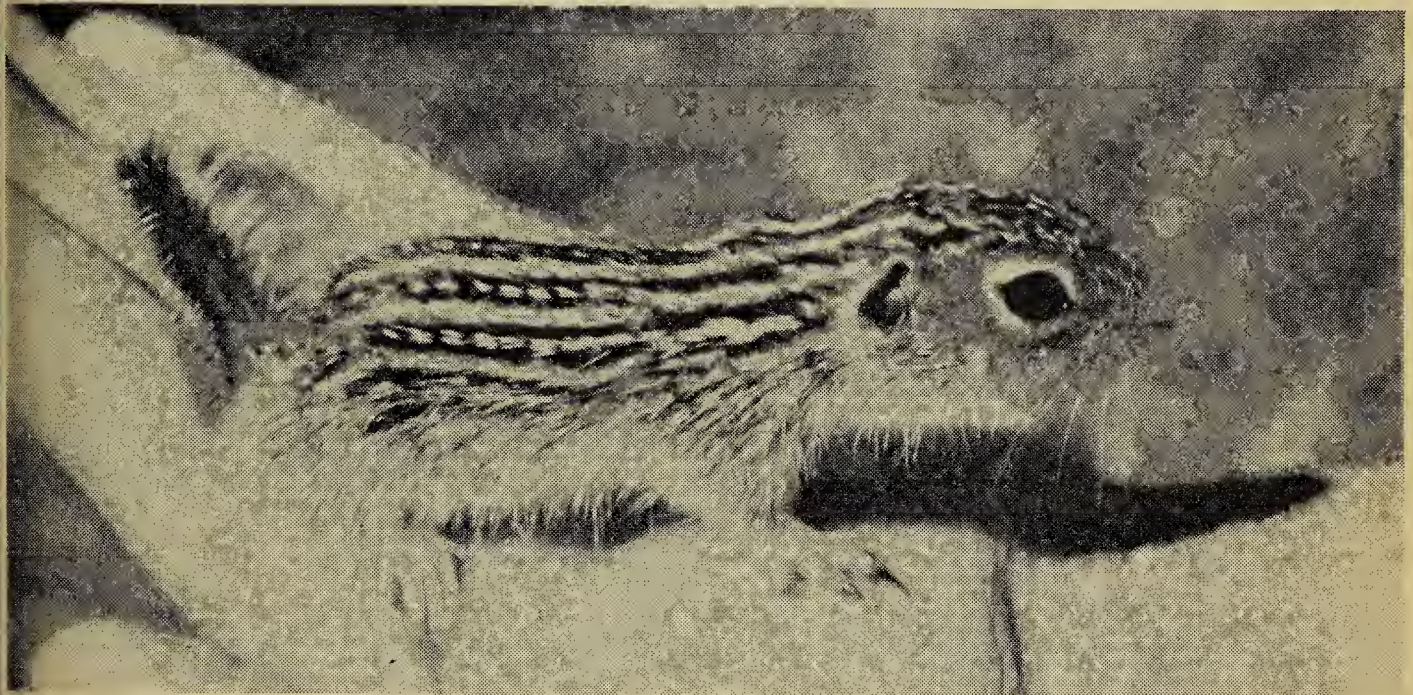


Photo by Doug Gilroy

THIRTEEN-LINED GROUND SQUIRREL

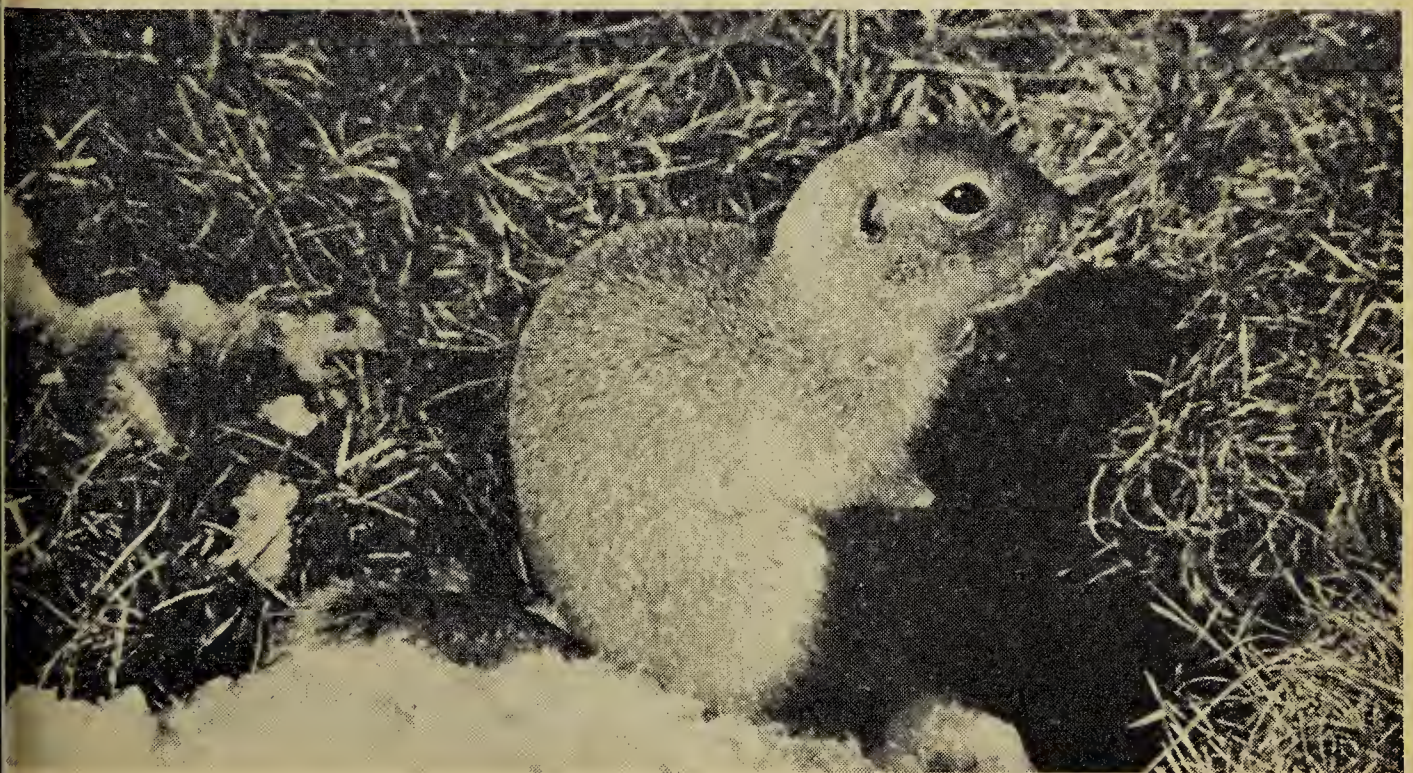


Photo by Doug Gilroy

RICHARDSON'S GROUND SQUIRREL