

## Mammal Notes

**KANGAROO RAT:** Mr. R. R. Carleton, Ravenscrag, writing to the Museum on August 2, 1956, describes this animal. "About two weeks ago, in a big coulee about two miles southwest of Ravenscrag, I saw an animal resembling an overgrown mouse with a very long tail and large hindlegs. It leaped, as a frog does, making jumps up to four feet long. It stopped with its head buried in the grass and I had a good look at the back and tail. The tail, slim and tapering, almost white below, mouse-coloured above, was about eight or ten inches long, and quivered like a delicate instrument. The back was glossy-looking . . . and the sides were slightly lighter in colour than the back. I tried to catch it but its leaps were very erratic and well calculated for escape. The body on the animal was probably about five inches long, or a little less, the front end being much less pronounced than the rear." This description agrees well with Dr. Nero's (*Blue Jay*, Vol. XIV, No. 1, March 1956).

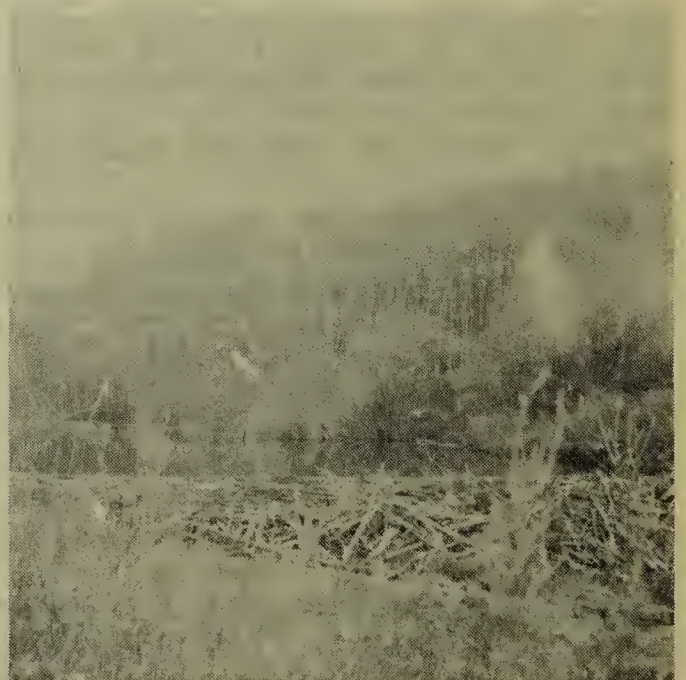
**SKUNK RAKING HAY:** Mr. C. T. Helstrom, Gray tells the following story: "I was considerably amused last week (May 30th) to look out of my house window and see a skunk going through the strangest motions for a skunk. It was making short runs forward through the grass where there was some dry hay from last year; then it would back up dragging its front legs like a rake, and making a small roll of hay follow along under its body. The wind was blowing strongly on that side of the house. When the skunk left the roll of hay the wind would blow it about. The skunk would go back to it and rescue it, and then go about raking feverishly for some more hay. Finally the skunk backed up to the nearby granary and pulled the rolls of hay under. It looks as if I am going to have a star boarder for the summer."

**BEAVER:** Mr. P. L. Beckie, Bladworth writes of the first beaver dam to be built in his area. "On Sunday May 20, 1956 we drove out to the

Community pasture to see for ourselves the beaver dam built in a creek that flows through a ravine into the Arm River. We found their winter quarters a large mound of mud, sticks, built against a bank in deep water amongst willow and badger brush. I imagine these quarters were well covered with snow during the winter, for there was still some snow on the hillside. Besides the main dam the beaver have built two smaller ones closer to the Arm River. The accompanying snaps show the dam and the surrounding country which is excellent habitat for Baird, Vesper, Lark, Clay-coloured, and Savannah Sparrows."



ARM RIVER AREA



BEAVER HOUSE